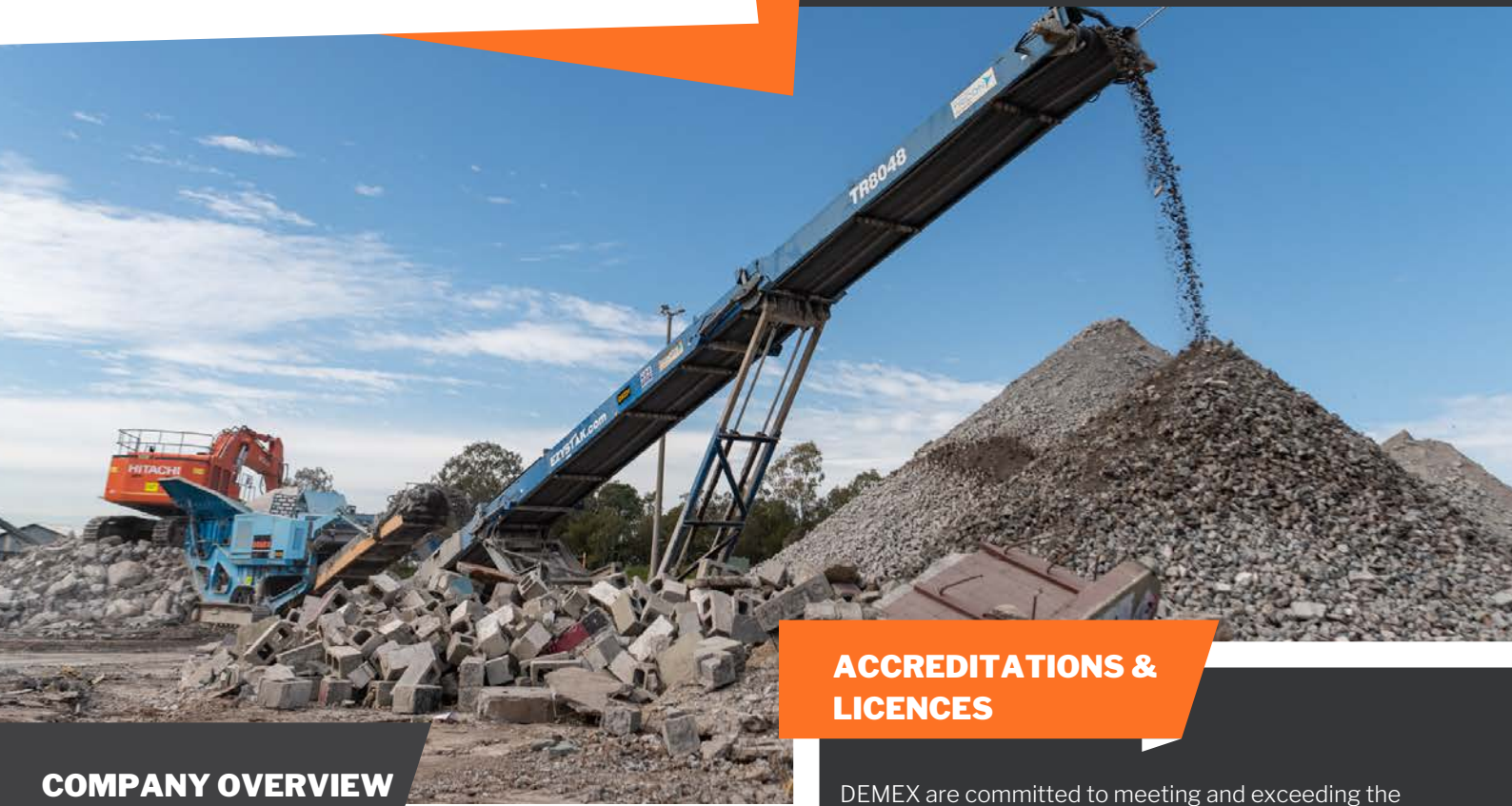


DEMEX

Demolition | Excavation | Remediation

Reaching New Heights

WASTE MANAGEMENT



COMPANY OVERVIEW

DEMEX is a privately owned complete solutions provider for industrial, resources, and civil projects requiring construction, demolition, and environmental services. Established over 25 years, our capacity to successfully deliver projects Australia-wide in difficult, and frequently remote locations, is predicated on an enduring commitment to excellence and diligent risk management.

Understanding each project is unique, DEMEX take an approach that fosters innovation within the parameters of relevant industry, environmental, and health and safety legislation and codes. Delivering value to our clients is integral to the way we work, an approach evident in our astute governance of project costs, time, quality, safety, and the environment.

As project management specialists, we draw from our inhouse engineering and trade teams, integrating specialist subcontractors as required to deliver end-to-end solutions

CAPABILITIES

Our standard practice is to identify, remove, and transport each type of waste in accordance with legislative requirements. We are committed to environmentally sound principles in the disposal of materials from our projects, and depending on the project, up to 90 percent of materials can be salvaged and then recycled and repurposed.

Understanding the importance of demolition waste recycling to meeting government waste reduction targets and satisfying community expectations, we have developed a robust and reliable network of suppliers and customers who together with us, help to minimise demolition project waste.

ACCREDITATIONS & LICENCES

DEMEX are committed to meeting and exceeding the compliance requirements of all licences and certifications to manage project risk and assure outcomes for our clients

- QLD Demolition Licence (Licence No. 2321795)
- QLD Class A Asbestos Removal (Licence No. 2321943)
- NSW Demolition Licence [Unrestricted (Licence No. AD213349)]
- ACT Demolition Licence [Class D – Valid for demolition of buildings and structures] (License No. 2019568)

We approach every project with a safety first' commitment. Business and project safety are managed under AS / NZS 4801:2001 – Occupational Health and Safety Management Systems.

- Federal Safety Accreditation
- ISO 9001:2015 - Quality Management Systems
- ISO 14001:2015 - Environmental Management Systems
- ISO 45001:2008 - Occupational Health & Safety Management Systems



DEMEX

Demolition | Excavation | Remediation

PO BOX 375, Ormeau 4208
Head Office: 78 Union Cct Yatala QLD 4207

ABN: 17 635 279 640

info@demex.com.au
WWW.DEMEX.COM.AU | 1300 634 777

FACILITIES AND EQUIPMENT

DEMEX owns, operates and maintains a substantial fleet of construction and demolition plant and equipment from its head office location. Inhouse service capacity extends to float transport, transport permits and escort services, a servicing and maintenance workshop, mobile site service vehicles, and exceptional ongoing plant risk assessment and maintenance.

- Excavators - 1.6T up to 62T with high-reach boom
- Attachments including various bucket sizes, pulverisers, steel sheers, rotating head and hammers
- Prime movers and semi trailer
- Trailers including super bins & float
- Hook trucks and bins
- Dedicated service truck
- Fleet of light vehicles
- Articulated haul trucks, compaction rollers and telescopic handlers
- Water Trucks

Our specialist 62 tonne high reach demolition excavator provides outstanding capability to undertake more complex at height demolition projects.

SUSTAINABILITY

DEMEX maintains an outstanding sustainability track record, with its resource recovery solutions, including screening for waste minimisation, scrap metal processing and recycling, precious metal segregation and salvage, onsite crushing for reuse, and remediation techniques to reduce landfill exposure. Our environmental management approach is tailored according to project needs with outcomes achieved which are beyond client requirements

TRACK RECORD

CLIENT:

Australian Munitions (Thales)

PROJECT:

Mulwala Explosives Facility (MUL043 & MUL037)

SCOPE OF WORK:

DEMEX was engaged by Australian Munitions to demolish 4 high-risk structures used extensively to produce nitrocellulose (NC). The structures were impacted with residual contamination in the form of friable pipe lagging, millboard and asbestos roof sheets at a height of 20m. DEMEX were then contracted to complete the demolition of 43 buildings at the facility. The site included an array of operations including oil refineries, chemical processing plants and storage depots that carry chemicals in large quantities. All works occurred with business as usual continuing on the site of Australia's most hazardous facility.

CLIENT:

Department Natural Resources and Mines (DNRM)

PROJECT:

Former tin processing plant in Collingwood QLD.

SCOPE OF WORK:

Demolition of Multiple structures including the processing plant, crusher, silo and conveyors. Removal of Asbestos contaminated material. Project was completed two weeks ahead of schedule.

CLIENT:

De Luca Corporation

PROJECT:

Warehouse Dismantling, Bulimba QLD

SCOPE OF WORK:

Demex was engaged to dismantle and remove a large industrial warehouse. Sourcing a buyer we were able to re-purpose more than 90 percent of warehouse materials.

PROJECT LEADERSHIP SUCCESS

Our commitment to project excellence is recognised as industry leading by our peers. Selected from a global pool, DEMEX was one of just four companies to be shortlisted in the Industrial category by the World Demolition Summit 2020. We consider this further evidence of how DEMEX delivers exceptional outcomes for our clients in management of project delivery, cost management, innovation, hazard remediation, and recycling. Further to the recognition of being shortlisted, DEMEX is thrilled to have won the Best New Entrant Award for 2020.



DEMEX

Demolition | Excavation | Remediation

COMMUNITY

Our commitment to community is demonstrated in supporting local and regional businesses through ongoing additional costs such as maintenance supplies and services along with a range of professional services, community mental health initiatives, adherence to a robust code of ethics, and providing pre-vocational training opportunities for skilled and unskilled local labour.

KEY PERSONNEL



RICHARD TODD
Company Director



SIMON LOWE
Project Manager



PAUL CLARK
Operations Manager

We take demolition waste recycling seriously - it is part of our core business - and an area we continually invest in because we understand how important it is for our clients, the environment, and broader community.

In time, we intend to expand our capacity to recycle project waste to meet the local and national targets.

OUR CLIENTS

THALES



Department of
Natural Resources,
Mines and Energy

HUTCHINSON
BUILDERS
Established 1912

WATPAC



CITY OF
GOLDCOAST™

RICHARD CROOKES
CONSTRUCTIONS

BMD
constructions

LIPMAN
DESIGNED TO PERFORM • BUILT TO LAST

EXPERIENCE

Experience across diverse industries and at various project stages allows DEMEX to continually adapt our expertise to new settings. With a capacity for innovation and an unwavering commitment to safety, this means DEMEX thrives in new and challenging project environments.



PROJECT DELIVERY

- » Project feasibility
- » Design
- » Engineering
- » Approvals
- » Programming
- » Costing
- » Execution
- » WHSEQ
- » Sustaining capital



INDUSTRY

- » Mining & Resources
- » Industrial
- » Health & Education
- » Government
- » Defence
- » Property
- » Building & Construction
- » Civil



CAPABILITY

- » Demolition
- » Remediation
- » Land Rehabilitation
- » Hazmat services
- » Civil engineering & bulk earthworks
- » Excavation
- » Environmental
- » Remote Sites
- » Feasibility Studies